

INSTALLATION INSTRUCTIONS

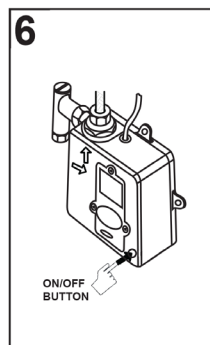
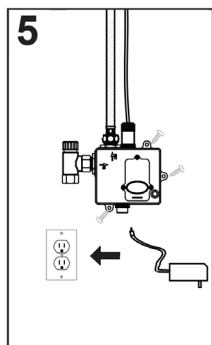
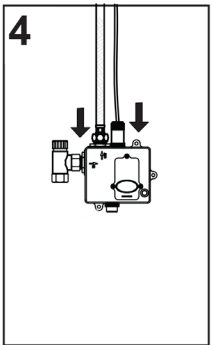
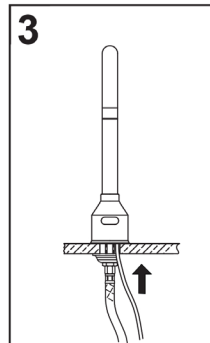
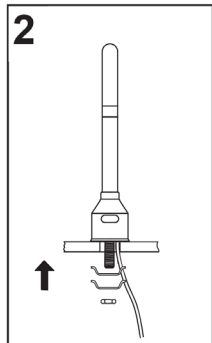
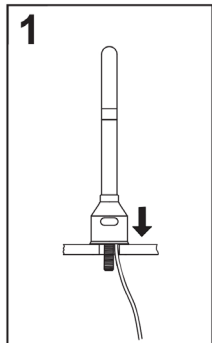
Automatic Sensor Faucet
Part #: 560-ESF-****

JACLO®
Confidence from start to finish.™



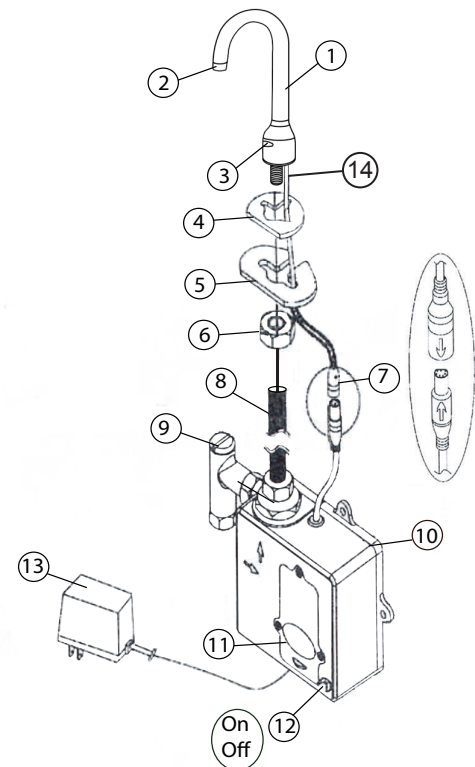
INSTALLATION

1. Mount faucet through 1" diameter hole in countertop. **Fig. 1**
2. From below, feed the rubber washer (4), stainless steel washer (5) through spout shank and waterproof connection cable (7). **Fig. 2**
3. Tighten nut (6) to spout shank (14). **Fig. 2**
4. Connect supply hose (8) to spout shank (14) **Fig. 3**
5. Connect supply hose (8) and waterproof connection cable (7) to control module (10). **Fig. 4**
6. Remove black plug from bottom of control module (10) and insert AC adapter (13) to control module (10). **Fig. 5**
7. Plug in AC adapter (13) to GFI Outlet. **Fig. 5**
8. Mount control module (10) to a TBD location. **Fig. 5**
9. Press ON/OFF control button (12). **Fig. 6**



PARTS LIST

1. SPOUT BODY
2. AERATOR
3. INFRARED SENSOR EYE
4. RUBBER WASHER
5. STAINLESS STEEL WASHER
6. MOUNTING NUT
7. WATERPROOF CONNECTION CABLE
8. SUPPLY HOSE
9. FILTER
10. CONTROL MODULE
11. BATTERY COVER
12. ON/OFF CONTROL BUTTON
13. ADAPTER AC100-240V
14. SPOUT SHANK



SPECIFICATION

Model: Automatic Faucet - 560-ESF-XXX

Body: Solid Brass

Power: i>DC-Alkaline AA Battery * 4

ii> AC/DC Input 100-240V AC 0.2A

Output 6V DC 1A

Working Pressure: 25 - 125PSI

Water Supply Pipe Size: NPSM 1/2-1/4

Operating Temperature Range: 35 - 180 F

Sensing Distance: 5.5"

Response Time: 0.3 sec

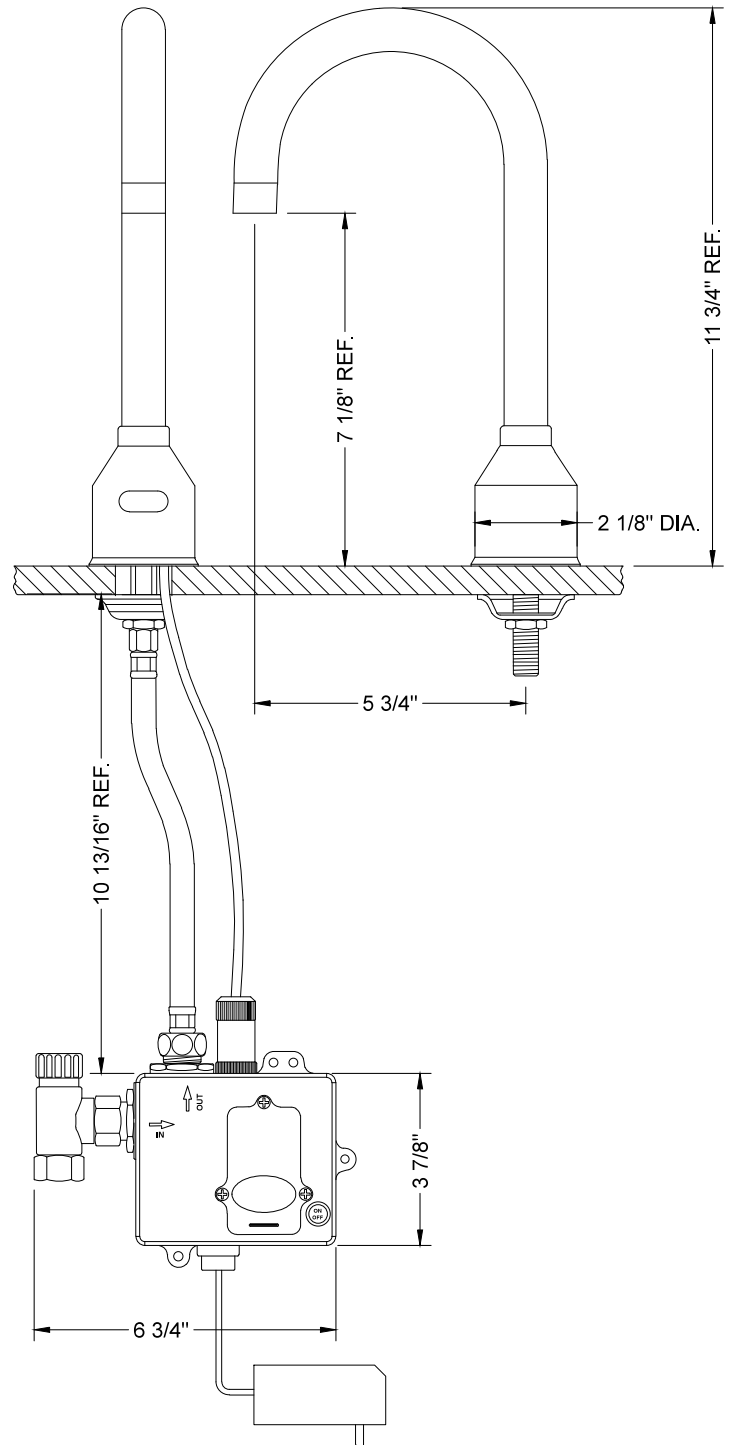
Off Delay Time: 1 sec

Fresh Battery Life Cycle: 400,000 on/off

Low Battery Indicator: Red LED flashing

FRONT VIEW

SIDE VIEW



OPERATING INSTRUCTIONS

1. Place hands under spout in front of sensor for water to turn on.
2. Water will stay on for one minute as long as hands are in sensor range.
3. Remove hands, and water turns off.
4. If AC power is off, battery backup operates faucet. (fresh batteries operate approximately 400,000 cycles).
5. If the red sensor light stays on, this indicates batteries need to be replaced (see Battery Replacement Installation).

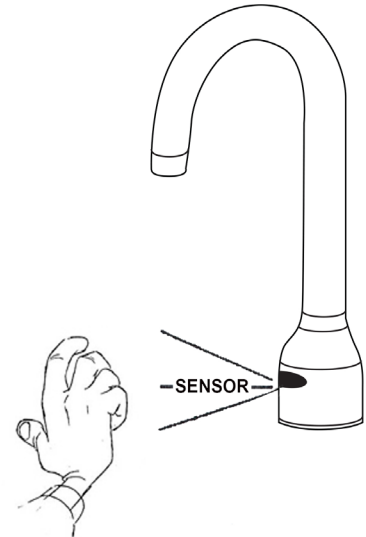
MAINTENANCE

Keep infrared sensor clean.

Periodically clean inlet filter part 9, page 2.

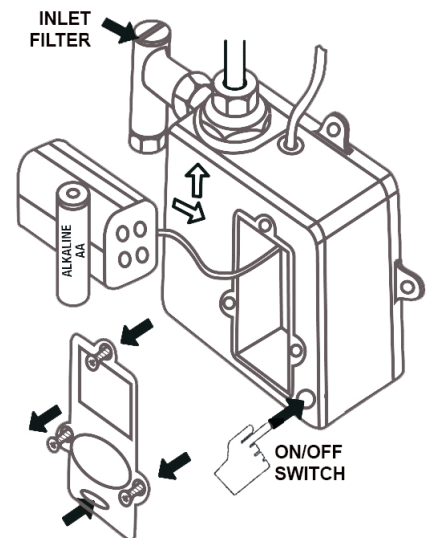
SENSOR DISTANCE SETUP

1. Press ON/OFF switch and hold until light remains on.
2. Release ON/OFF switch, light goes out.
3. Place hand at desired distance (3/4" - 6 1/2") light will flash.
4. When light is steady on, immediately press ON/OFF switch. New distance is set.



BATTERY REPLACEMENT INSTALLATION

1. If the red infrared eye LED light is on and water stops flowing, this indicates fresh batteries are needed.
2. Prepare four fresh "AA" Alkaline batteries.
3. Unscrew the three screws on battery cover.
4. Remove the battery cover.
5. Remove the four old batteries.
6. Hold ON/OFF button for 7-10 seconds to erase the CPU memory.
7. Install the four fresh Alkaline batteries properly.
8. Red LED will flash in 2 seconds which indicates normal function is retrieved.
9. Reinstall the battery cover.



To learn more about JACLO's warranty, please visit [**jaclo.com**](http://jaclo.com)